



LINEDA

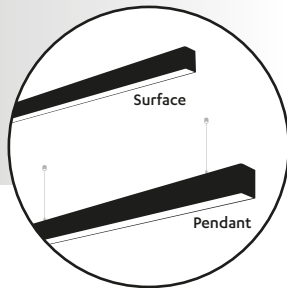
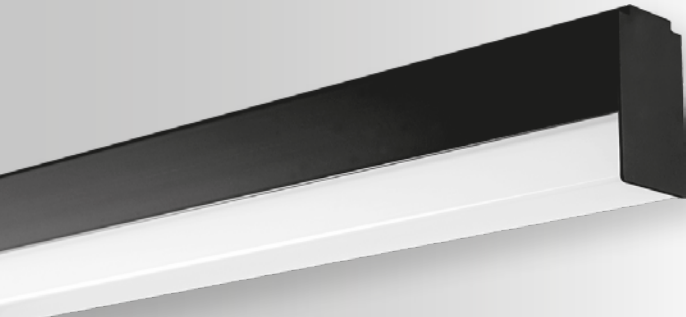
APPLICATION AREAS

Shops • Cafes • Restaurants • Offices • Training Halls • Hospitals • Facilities • Sports Facilities
It is ideal for use in areas that demand lights with high lumen and long lifespan.



LINEDA

LINEAR LUMINAIRE (DISCOUNT STORE)

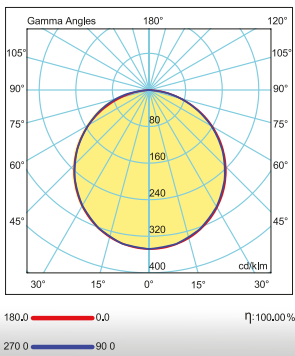


PRODUCT SPECIFICATIONS

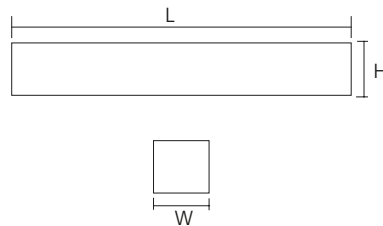
- Body** : Alu Body / RAL9005
- Optic Cover** : PC Opal Diffuser
- Led Driver** : Osram-Tridonic-Philips-3N
- Led Chip** : Samsung, Osram, Seoul
- Input Voltage** : 220-240V/AC 50-60Hz
- Temperature Range** : -10°C~+40°C
- CRI** : CRI > 80
- IP Class** : IP40
- Options** : Body Color Options : RAL9016/RAL7001
Application Options : Surface/Pendant
Color Temperature : 3000K/4000K/6500K
Emergency Kit - DALI



PHOTOMETRIC DISTRIBUTION



TECHNICAL DRAWING



ACCESSORIES

Joining Connector	Surface Mounting Kit	U-Shape Mounting Kit
 SP060.10.00011	 R070.10.00002	 SP060.10.00006
End Cap	Energy Input	1,2M. Suspension Wire
 R010.10.00009	 R050.10.00002	 C030.98.12001

PRODUCT SPECIFICATIONS

Item Code	Power (W)	Luminaire Lumen (lm)	Color Temperature (K)	Efficiency (lm/W)	Dimensions (LxWxH)	Qty/Carton	Carton Size (LxWxH)	G.W/Carton
LLN60.036	36W	3.600	3000/4000/6500	100lm/W	1000x40x65mm	12	11545x170x250mm	16.4 kg

*3N Company has the right to make any changes it deems necessary without prior notice.
*Technical data has a tolerance of ± 10%.