

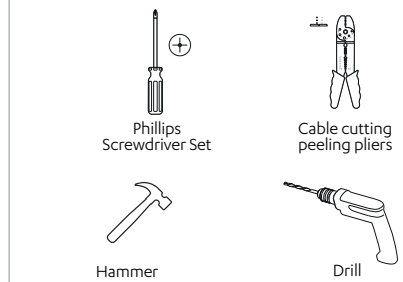
## USER MANUAL

### WARNINGS

- LED Light sources are extremely bright. Do not look directly into the LED beam to avoid damage to the eyes.
- The light source in this luminaire must only be replaced by the manufacturer or its service agent or a similarly qualified person.
- Make sure that the product barcode, model and serial number are not damaged. If these are not readable or are damaged, your product will be out of warranty.
- In the event of damage to the external flexible cable or cord of this luminaire; it must be replaced only by the manufacturer or its authorized service or equivalent qualified personnel in order to avoid a hazard.
- This luminaire is suitable for use at ambient temperatures between -20°C and +50°C.
- This luminaire is suitable for indoor use and is not suitable for environments with explosive and corrosive gases.
- It should not be mounted on surfaces that will prevent the natural air circulation of the luminaire or be covered. Excessive air circulation that may occur during use. In order to prevent heating, care should be taken to ensure that there is sufficient air space between the luminaire body and the surrounding objects.
- Disconnect the power before starting installation. Luminaire supply voltage is 230V AC 50-60Hz and the product must be connected to the ground line and A fuse of appropriate value and a residual current relay must be installed on the line.
- Inappropriate voltage or connection type, high pulse energy discharges (such as lightning), mains power surges, unauthorized tampering with or modification of product components voids the product warranty.
- To prevent damage or abrasion to the cables, connect the cables away from metal conduit edges or sharp corners.
- Do not use solvent solvent chemicals for product cleaning, clean with warm soapy water.
- The "Manufacturer" cannot be held responsible for any damage or injury caused by improper use and installation of the luminaire.

### İşaretlemeler:

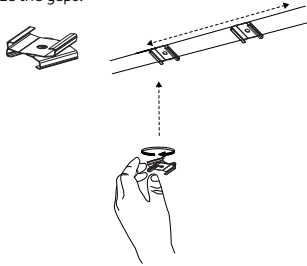
### Kullanılacak El Aletleri:



## ASSEMBLY INSTRUCTIONS

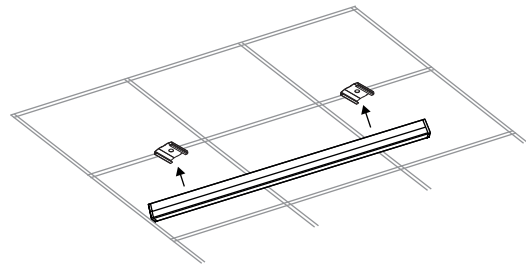
1

Attach the lower narrow part of the hanging apparatus in the box to the ceiling carrier profiles by slightly stretching, turn the upper wide part according to the luminaire position, slide the apparatus on the profile and equalize the gaps.



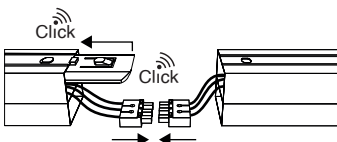
2

Press the armature lightly by aligning it on the apparatus. When it clicks, make sure that it grips by pulling it downwards.



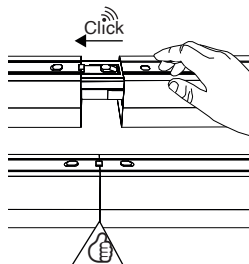
3

Push the plastic joining device into the profile on the left side and make sure that the spring-loaded button protrudes from the profile hole. Connect the male and female sockets and earthing terminals together.



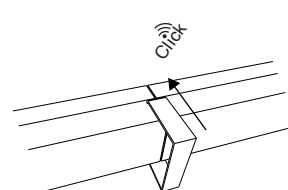
4

Collect the cables into the armature and complete the joining process by pushing the profile on the right into the joiner.



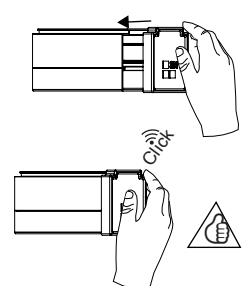
5

Jointing joints of joint sealant apparatus by pressing on it from the bottom.

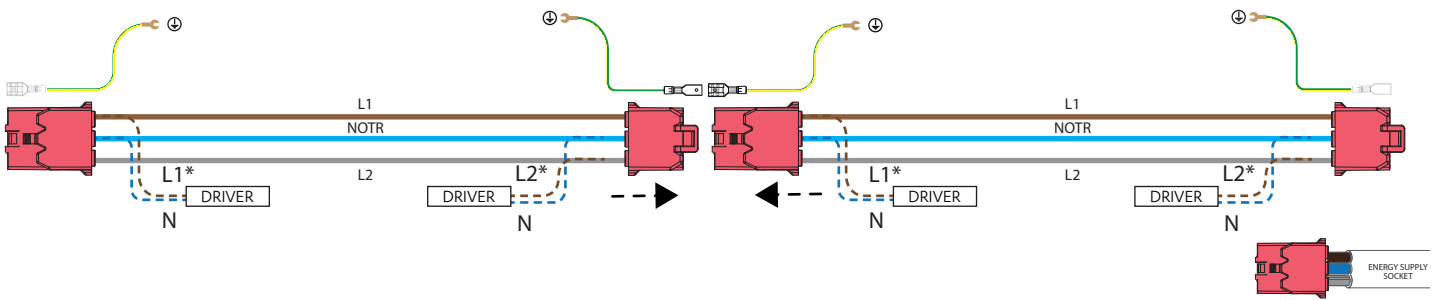


6

Jointing joints of joint sealant apparatus by pressing on it from the bottom.



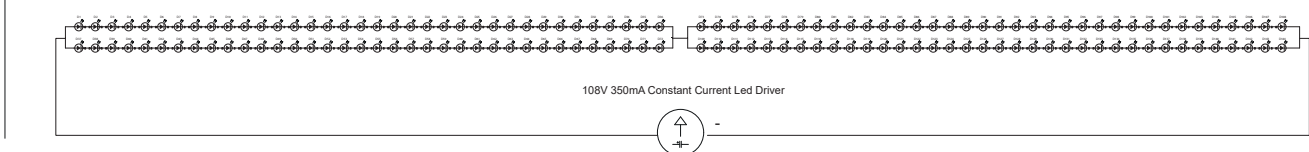
## CONNECTION SCHEME



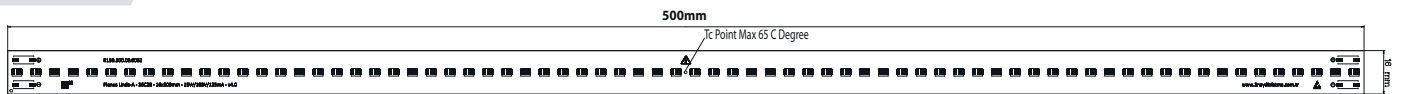
## ASSEMBLY INSTRUCTIONS ACCORDING TO CEILING PENDANT MODEL TYPE

- Open the screw cover by turning it.
- Drill a hole in the ceiling and fix the screw holder to the ceiling.
- Insert the steel wire bead side through the hole of the screw cap and screw the cap onto the screw holder.
- Insert the switch through the hole in the bracket and push the wire into the switch.
- Equalize the wire lengths by pushing them into the socket.
- Press the apparatus to the armature case until it clicks. Attach 2 wires for 1.5 mt long armature and 3 wires for 3 mt long armature.

## CONNECTION DIAGRAM



## PCB DRAWING



## TECHNICAL SPECIFICATIONS

Item Code	Power (W)	Luminaire Lumen (lm)	Color Temperature (K)	Efficiency (lm/W)	Dimensions (LxWxH)	Qty/Carton	Carton Size (LxWxH)	G.W/Carton
LLN10.036	36W	3.600	3000/4000/6500	100lm/W	1000x87x87mm	6	1545x170x250mm	8.30 kg
LLN20.036	36W	3.600	3000/4000/6500	100lm/W	1000x57x87mm	6	1545x170x250mm	7.56 kg
LLN30.036	36W	3.600	3000/4000/6500	100lm/W	1000x55x65mm	6	1545x170x250mm	8.2 kg
LLN40.027	27W	3.375	3000/4000/6500	125lm/W	1000x40x45mm	16	1545x170x250mm	11.2 kg
LLN40.040	40W	5.000	3000/4000/6500	125lm/W	1000x40x45mm	16	1545x170x250mm	11.2 kg
LLN50.036	36W	3.600	3000/4000/6500	100lm/W	1000x40x65mm	12	1050x170x250mm	16.4 kg
LLN60.036	36W	3.600	3000/4000/6500	100lm/W	1000x40x65mm	12	11545x170x250mm	16.4 kg
LLN70.016	16W	2.150	3000/4000/6500	135lm/W	560x40x55mm	32	1545x170x250mm	-
LLL70.032	32W	4.300	3000/4000/6500	135lm/W	1120x40x55mm	16	1545x170x250mm	-
LLN80.022	22W	2.750	3000/4000/6500	125lm/W	1420x40x50mm	12	1430x170x180mm	11.40 kg
LLN80.044	44W	5.500	3000/4000/6500	125lm/W	2840x40x50mm	12	2890x170x180mm	25 kg