

USER MANUAL

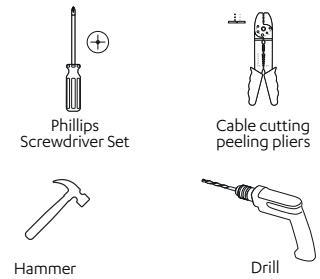
WARNINGS

- LED Light sources are extremely bright. Do not look directly into the LED beam to avoid damage to the eyes.
- The light source in this luminaire can be changed by the End user.
- Make sure that the barcode, model and serial number of the product are not damaged. If these are not read or are worn out, your product will be out of warranty.
- In case of damage to the external twisted cable or cord of this luminaire; must be replaced only by the manufacturer or its authorized service agent or equivalent qualified personnel in order to avoid a hazard.
- This luminaire is suitable for use at ambient temperatures between -20°C and +50°C.
- This luminaire is suitable for indoor use and is not suitable for environments with explosive and corrosive gases.
- The luminaire should not be mounted on surfaces that will prevent natural air circulation or be covered. In order to prevent overheating that may occur during use, care should be taken to ensure that there is sufficient air space between the luminaire body and the surrounding objects.
- Disconnect the power before starting installation. The supply voltage of the luminaire is 230V AC 50-60Hz and the product must be connected to the ground line and a fuse and residual current relay of appropriate value must be installed on the line.
- Inappropriate voltage or connection type, high pulse energy discharges (such as lightning), mains power surges, unauthorized intervention to product components, modifications to the product will void the product warranty.
- To prevent damage or abrasion to the cables, connect the cables away from metal conduit edges or sharp corners.
- Do not use solvent solvent chemicals for cleaning the product, clean with warm soapy water.
- The "Consumer" cannot be held responsible for any damage or injury caused by improper use and installation of the luminaire.

Markings:



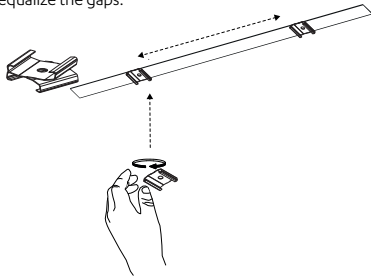
Hand tools to be used :



MONTAJ TALİMATI

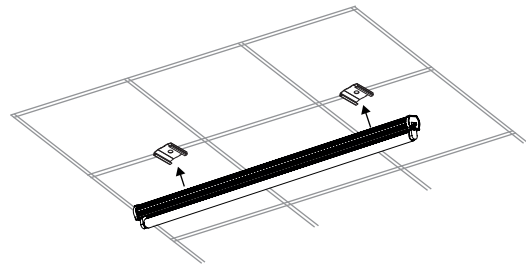
1

Attach the lower narrow part of the hanging apparatus in the box to the ceiling carrier profiles by slightly stretching, turn the upper wide part according to the luminaire position, slide the apparatus on the profile and equalize the gaps.



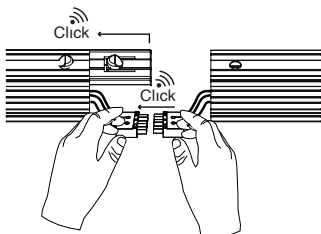
2

Press the armature lightly by aligning it on the apparatus, when it clicks, make sure that it grips by pulling it downwards.



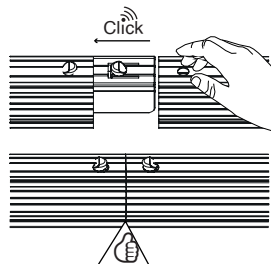
3

Push the plastic jointing device into the profile on the left side and make sure that the spring-loaded button protrudes from the profile hole. Connect the male and female sockets and earthing terminals together.



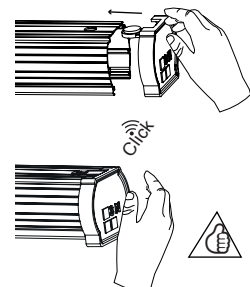
4

Collect the cables into the armature and complete the joining process by pushing the profile on the right into the joiner.

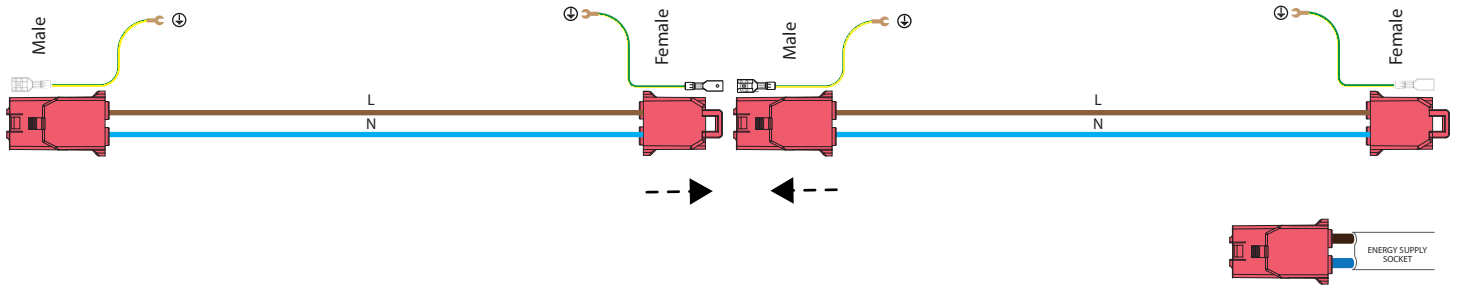


5

Attach the joint covering apparatus to the joint by pressing it from below.



CONNECTION DIAGRAM



ASSEMBLY INSTRUCTIONS ACCORDING TO CEILING PENDANT MODEL TYPE

1

Open the screw cover by turning it.



2

Drill a hole in the ceiling and fix the screw holder to the ceiling.



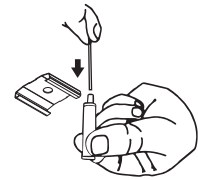
3

Insert the steel wire bead side through the hole of the screw cap and screw the cap onto the screw holder.



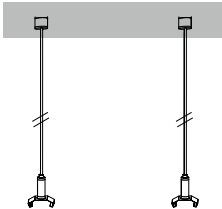
4

Insert the switch through the hole in the bracket and push the wire into the switch.



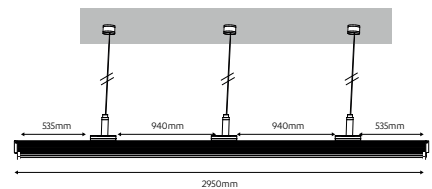
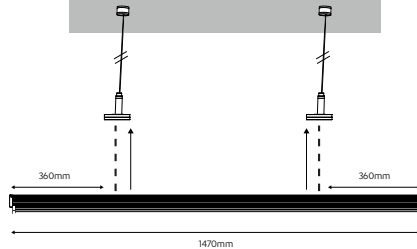
5

Equalize the wire lengths by pushing them into the socket.



6

Press the apparatus to the armature case until it clicks. Attach 2 wires for 1.5 mt long armature and 3 wires for 3 mt long armature.



TECHNICAL SPECIFICATIONS

T5

Item Code	Dimension (cm)	Energy Supply	Dimension (cm)	Qty/Carton	Carton Size (LxWxH)	G.W/Carton
LMR20.150	150	Continuous Energy	40x1470x40mm	15	270x1500x170mm	8 kg
LMR20.300	300	Hopping Energy	40x2950x40mm	16	250x3000x170mm	19.6 kg

T8

Item Code	Dimension (cm)	Energy Supply	Dimension (cm)	Qty/Carton	Carton Size (LxWxH)	G.W/Carton
LMR10.150	150	Continuous Energy	40x1520x35mm	14	260x1550x170mm	7.4 kg
LMR10.300	300	Hopping Energy	40x3045x35mm	16	260x3100x180mm	17 kg