



Tory Product Introduction
Video

TORY

AREAS OF APPLICATION

Shops • Cafes • Restaurants • Parking Lots • Offices • Training Halls • Hospitals
• Hangars • Warehouses • Factories • Facilities • Sports Facilities
Designed for use in environments that demand long-lasting and high lumen lighting.



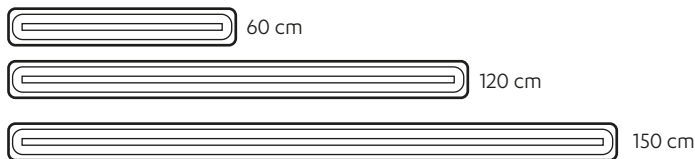
TORY

TRI-PROOF LUMINAIRE

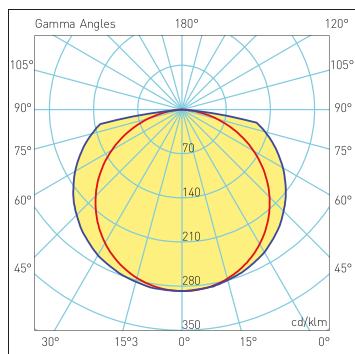


PRODUCT SPECIFICATIONS

- Body** : ABS / PC Body
- Optic Cover** : Opal PC Diffuser
- Driver** : Osram-Tridonic-Philips-3N
- Led Chip** : Samsung, Osram, Seoul
- Input Voltage** : 220-240V/AC 50-60Hz
- Temperature Range** : -10°C~+40°C
- CRI** : CRI > 80
- IP Class** : IP65
- Options** : Application Options : Surface / Pendant
Color temperature : 3000K/4000K/6500K
Emergency Kit- DALI



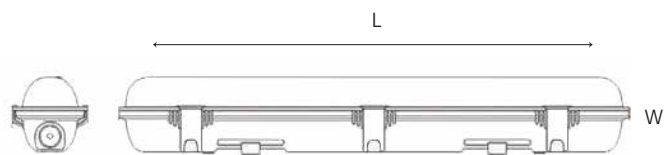
PHOTOMETRIC DISTRIBUTION



180,0 — 0,0 η : 100,00%

270 0 — 90 0

TECHNICAL DRAWING



PRODUCT SPECIFICATIONS

Item Code	Power (W)	Luminaire Lumen (lm)	Color Temperature (K)	Efficiency (lm/W)	Dimensions (LxWxH)	Qty/Carton	Carton Size (LxWxH)	G.W/Carton
LET40.020	20W	2.200	3000/4000/6500	100lm/W	600x57x85mm	18	320x1300x320mm	18.5 kg
LET40.035	35W	3.850	3000/4000/6500	100lm/W	1200x57x85mm	9	320x1300x320mm	18.5 kg
LET40.045	45W	4.950	3000/4000/6500	100lm/W	1500x57x85mm	9	320x1300x320mm	18.5 kg

*3N Company has the right to make any changes it deems necessary without prior notice.
*Technical data has a tolerance of $\pm 10\%$.