

# DECORATIVE

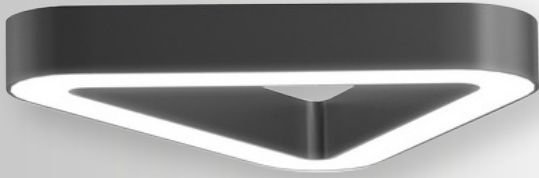
## APPLICATION AREAS

Shops • Cafes • Restaurants • Offices • Training Halls • Hospitals  
It is ideal for use in areas that demand lights with high lumen and long lifespan.



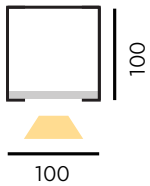
# TRIOUS 20

DECORATIVE LUMINAIRE

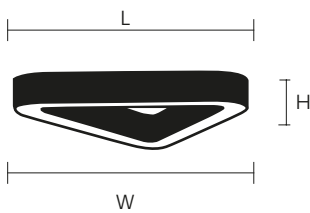


## PRODUCT SPECIFICATIONS

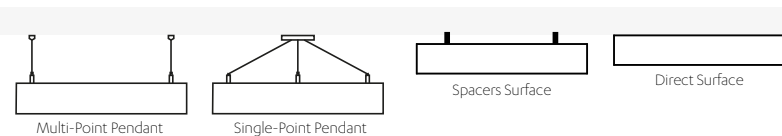
<b>Body</b>	: Electrostatic Powder Coated DKP Sheet Body/RAL9005
<b>Optic Cover</b>	: Diffuser (PMMA/PC)
<b>Led Driver</b>	: Tridonic, Osram
<b>Led Chip</b>	: Samsung, Osram, Seoul
<b>Input Voltage</b>	: 220-240V/AC 50-60Hz
<b>Temperature Range</b>	: -10°C~+40°C
<b>CRI</b>	: CRI > 80
<b>IP Class</b>	: IP40
<b>Options</b>	: Body Color Options: RAL9016/RAL7001 Application Options: Surface/Surface Color Temperature: RGBW/2700K/3000K/4000K/ Tunable White DALI/NON-DIMMABLE/BLUETOOTH



### TECHNICAL DRAWING



### APPLICATION AREAS



### PRODUCT SPECIFICATIONS

Item Code	Power (W)	Luminaire Lumen (lm)	Color Temperature (K)	Efficiency (lm/W)	Dimensions (LxWxH)	Qty/Carton	Carton Size (LxWxH)	G.W/Carton
LLN90.039	45W	4.050	RGBW/2700/3000/4000	90lm/W	670x100mm	1	810x100x810mm	7.5 kg
LLN90.078	65W	5.850	RGBW/2700/3000/4000	90lm/W	950x100mm	1	1010x105x1010mm	9.5 kg

\*3N Company has the right to make any changes it deems necessary without prior notice.  
\*Technical data has a tolerance of ±10%.