



Tulip Product Introduction
Video

TULIP

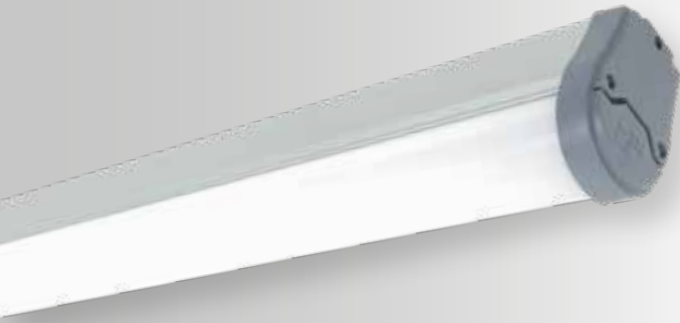
AREAS OF APPLICATION

Shops • Cafes • Restaurants • Parking Lots • Offices • Training Halls • Hospitals
• Hangars • Warehouses • Factories • Facilities • Sports Facilities
Suitable for use in the areas requiring long-lasting and high lumen lighting.



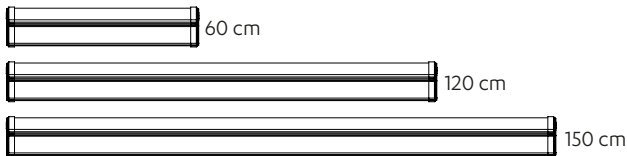
TULIP

TRI-PROOF LUMINAIRE

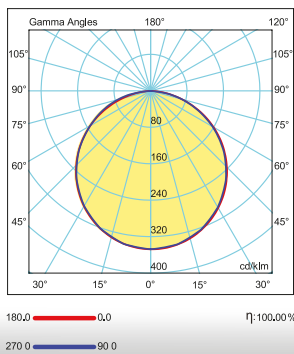


PRODUCT SPECIFICATIONS

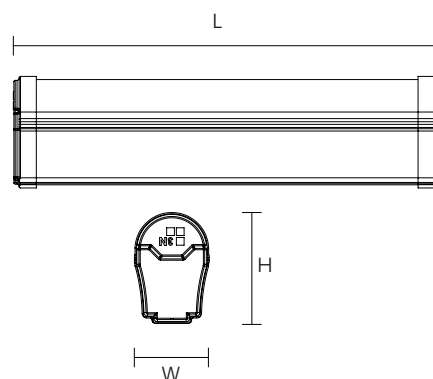
- Body** : PC Body / RAL 7001
- Optic** : Opal PC Diffuser
- Driver** : Osram-Tridonic-Philips-3N
- Led Chip** : Samsung, Osram, Seoul
- Input Voltage** : 220-240V/AC 50-60Hz
- Temperature Range** : -10°C~+40°C
- CRI** : CRI > 80
- IP Class** : IP65
- Options** : Application Options : Surface / Pendant
Color Temperature: 3000K/4000K/6500K
Emergency Kit - DALI



PHOTOMETRIC DISTRIBUTION



TECHNICAL DRAWING



ACCESSORIES

Surface Mounted Hanger



R070.10.00002

OPTIONAL ACCESSORIES

Pendant Hanger



SP060.10.00006

1,2M. Pendant Wire



C030.98.12001

PRODUCT SPECIFICATIONS

Item Code	Power (W)	Luminaire Lumen (lm)	Color Temperature (K)	Efficiency (lm/W)	Dimensions (LxWxH)	Qty/Carton	Carton Size (LxWxH)	G.W/Carton
LET10.020	20W	2.000	3000/4000/6500	100lm/W	600x55x85mm	18	1310x310x320mm	11 kg
LET10.036	36W	3.600	3000/4000/6500	100lm/W	1200x55x85mm	9	1260x200x270mm	11 kg
LET10.045	45W	4.500	3000/4000/6500	100lm/W	1500x55x85mm	9	1600x100x100mm	14 kg
LET10.055	55W	7.150	3000/4000/6500	130lm/W	1500x55x85mm	9	1600x100x100mm	14 kg

*3N Company has the right to make any changes it deems necessary without prior notice.
*Technical data has a tolerance of ± 10%.