



Tulip Product Introduction  
Video

# TULIP

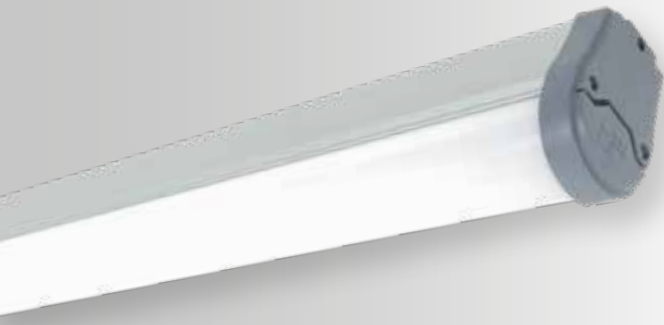
## AREAS OF APPLICATION

Shops • Cafes • Restaurants • Parking Lots • Offices • Training Halls • Hospitals  
• Hangars • Warehouses • Factories • Facilities • Sports Facilities  
Suitable for use in the areas requiring long-lasting and high lumen lighting.



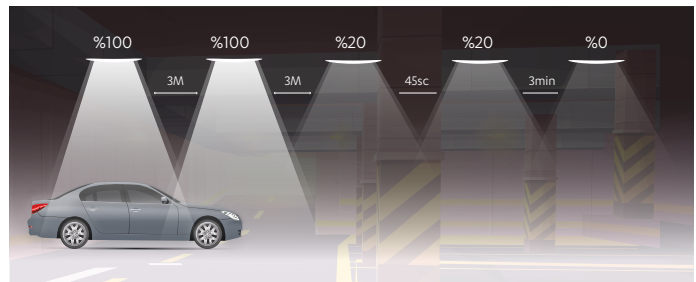
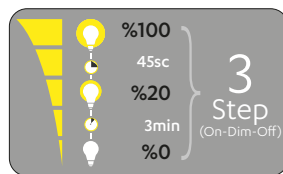
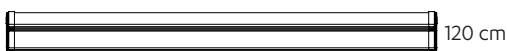
# TULIP SMART

TRI-PROOF LUMINAIRE

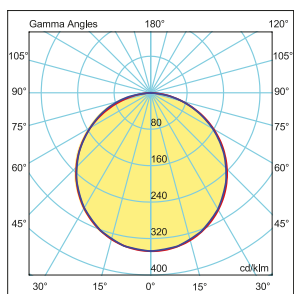


## PRODUCT SPECIFICATIONS

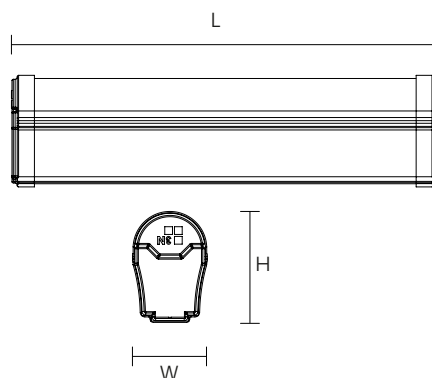
<b>Body</b>	: PC Body / RAL 7001
<b>Optic</b>	: Opal PC Diffuser
<b>Driver</b>	: 3N
<b>Led Chip</b>	: Samsung, Osram, Seoul
<b>Input Voltage</b>	: 220-240V/AC 50-60Hz
<b>Temperature Range</b>	: -10°C~+40°C
<b>CRI</b>	: CRI > 80
<b>IP Class</b>	: IP65
<b>Options</b>	: Application Options : Surface / Pendant Color temperature : 3000K/4000K/6500K Emergency Kit



### PHOTOMETRIC DISTRIBUTION



### TECHNICAL DRAWING



### ACCESSORIES



### OPTIONAL ACCESSORIES



## PRODUCT SPECIFICATIONS

Item Code	Power (W)	Luminaire Lumen (lm)	Color Temperature (K)	Efficiency (lm/W)	Dimensions (LxWxH)	Qty/Carton	Carton Size (LxWxH)	G.W/Carton
LET10.024	24W	3.000	3000/4000/6500	125lm/W	1200x55x85mm	9	1260x200x270mm	11 kg
LET10.036	36W	4.320	3000/4000/6500	120lm/W	1200x55x85mm	9	1260x200x270mm	11 kg

\*3N Company has the right to make any changes it deems necessary without prior notice.  
\*Technical data has a tolerance of ±10%.